



TRAILHEADS = ●

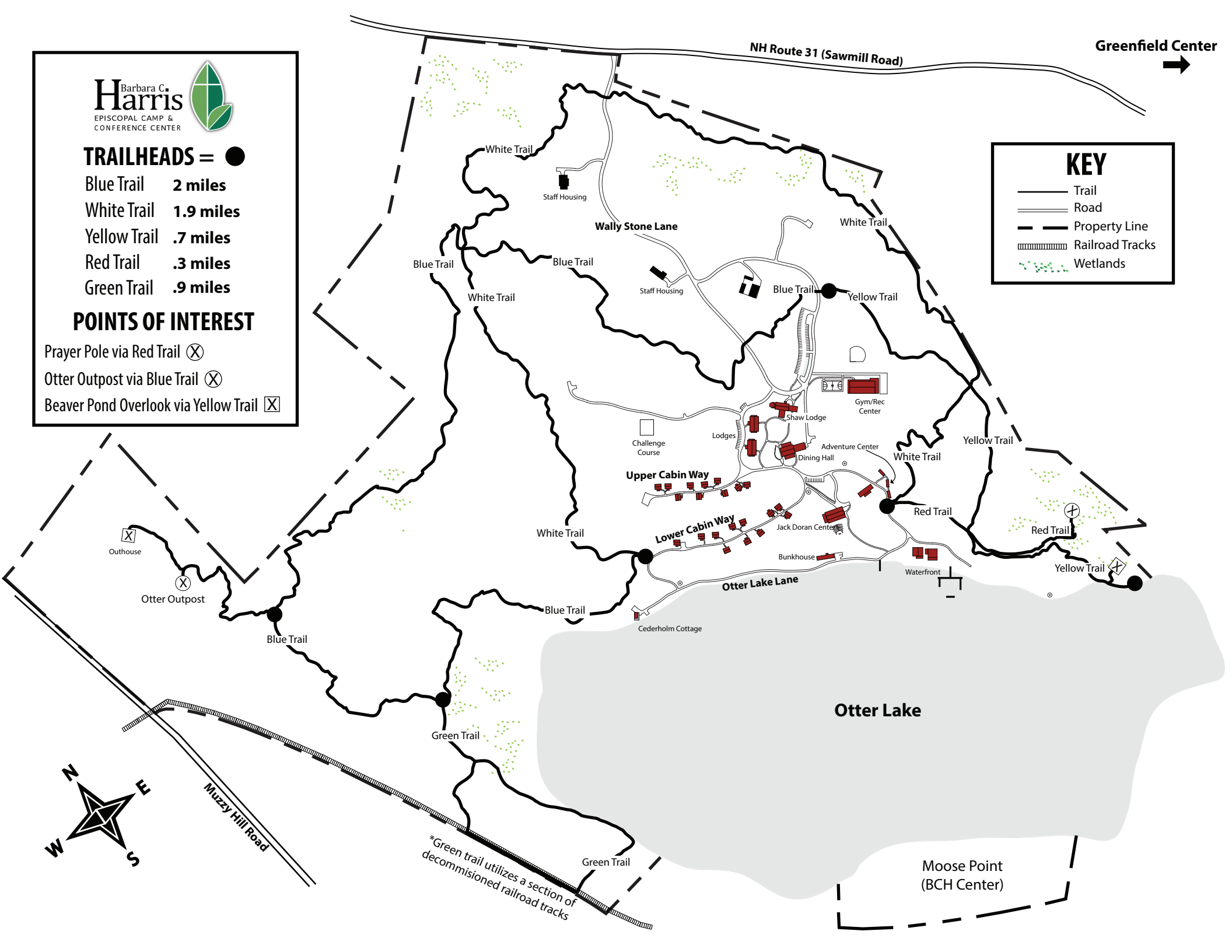
- Blue Trail 2 miles
- White Trail 1.9 miles
- Yellow Trail .7 miles
- Red Trail .3 miles
- Green Trail .9 miles

POINTS OF INTEREST

- Prayer Pole via Red Trail (⊗)
- Otter Outpost via Blue Trail (⊗)
- Beaver Pond Overlook via Yellow Trail (⊗)

KEY

- Trail
- Road
- - - Property Line
- ▤▤▤▤▤▤▤▤▤▤ Railroad Tracks
- Wetlands



*Green trail utilizes a section of decommissioned railroad tracks

Greenfield Center →